

bluewave
SUP

Owner's
Guide

THE WAVE RIDER

bluewavekayaks.com



IMPORTANT!

In the event of disregarding any instructions and safety precautions in the owner's manual or on the product, injuries may result, including death.

BEFORE USING YOUR STAND-UP PADDLE BOARD, READ THIS IMPORTANT INFORMATION

- Never exceed the weight capacity of this board.
- Always wear a personal flotation device (PFD) approved by the Coast Guard.
- Never use this product after sunset, or under poor lighting conditions.
- Never allow minors to use this board without an adult supervisor.
- Never paddle board in severe weather or water conditions that could affect your ability to return to shore.
- Do not use after consuming alcohol or any other substances that may impair your ability to safely operate the paddleboard and associated equipment.
- Keep equipment clear of sharp objects and extreme heat.
- Check local laws and regulations regarding proper and safe use of this product.
- Do not use alone.
- Never deflate an inflated board with the valve wrench.
- Store in a cool, shaded area.

CONTENTS

INFLATING AND DEFLATING 3 / HAND PUMP ASSEMBLY 3 / INFLATING 4
DEFLATING 4 / FIN INSTALLATION 5 / PADDLE 5 / PADDLE ORIENTATION 5
CARE AND STORAGE 6 / TRANSPORTING 6 / DETECTING LEAKS 6
REPAIRING YOUR ISUP 7

INFLATING AND DEFLATING

- The board can be inflated with the provided hand pump.
- Do not use an air compressor as it may cause damage to your board from over inflation. An electric automatic sup pump may be used to inflate your board.
- When in a warm environment, underinflate the board slightly to allow for ambient heat expansion.
- A slight drop in pressure due to temperature may occur after a few days.
- If you are going on a long paddle, make sure you inflate your board at least 24 hours prior to using it to ensure that it is airtight.
- Never over inflate the board.
- When not in use, do not let inflated board sit out on the sun for extended periods of time.

HAND PUMP ASSEMBLY

Attach the air hose to the connector by twisting clockwise.

INFLATING

1. Locate air inflation valve on the tail of the board.
2. Remove the protection cover.
3. Make sure inner valve spring is popped up by pushing down and twisting. When valve spring is up, it should automatically spring back up when pushed down.
4. Connect hand pump air hose connector to air inflation valve (1) on board and twist clockwise to secure.
5. Inflate the board to 12-15psi (2).
6. Gently remove air hose connector from board by applying pressure down and twisting counter clockwise in a single, fast motion.
7. Close valve cover.



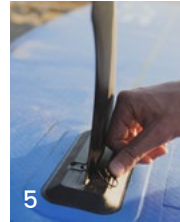
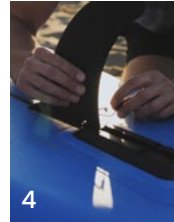
DEFLATING

1. Remove valve cover.
2. Press the inner valve spring and twist slightly to lock inner valve spring in downward position (3).
3. Allow board to freely release air for 1-2 minutes.
4. Start rolling up the inflatable SUP from the opposite end of the air inflation valve.



FIN INSTALLATION

1. Slide the fin into fin box with fin pointing towards the back of your sup (4).
2. Insert pin screw to secure your fin to the board (5).
3. Verify the fin is securely attached before entering water.



PADDLE

Your inflatable sup comes with an adjustable 3 piece paddle. In order to assemble and use properly, follow these steps:

1. Your paddle blade has a 10 degree angle, arrange blade so that it is bent away from your body.
2. Assemble the upper shaft to the lower portion of the paddle, and arrange the grip on top so it fits comfortably in your hand.

PADDLE ORIENTATION

1. With paddle assembled, locate adjustable assembly towards handle grip.
2. Adjust the paddle so that the handle is 9" over your head.
3. As you hold the grip, make sure the blade bends away from your body.
4. Place your bottom hand approximately half way down the shaft of the paddle.

Please note, that water may enter the paddle shaft causing the paddle to sink.

CARE AND STORAGE

- Optimal inflation is 12-15psi.
- Keep board in a well ventilated, shaded area when not in use.
- Wet board should not be stored in the bag for an extended period of time. Allow board to completely dry before long term storage.
- Rinse sand and saltwater from the board after each use.
- Avoid using heavy chemical based products to clean board. If needed, sparingly use a very mild soap to clean heavier residues or dirt build up.
- When rolling up your board, always roll from opposite end of inflation valve and once completely rolled, pop up inner valve spring to keep air out.
- When storing your board, keep it in a clean and dry place out of the sun.
- When storing your board in a hot area, remove some air to allow for expansion, or deflate completely before storage.

TRANSPORTING

- Do not transport your inflatable sup on top of a vehicle.
- When transporting, be sure to keep clear of any sharp objects and heat producing items.
- Never carry more than you can handle comfortably.
- Your sup comes with a carry bag for ease of travel and is intended to carry your sup and sup accessories only.
- Always use proper lifting and carrying techniques to avoid injury.

DETECTING LEAKS

Follow these steps to fix problems such as the SUP not inflating or air escaping from the pump:

5. Retighten air inflation valve on your sup with your supplied valve wrench.
6. Verify the pump hose is properly fastened to the pump as well as the inflation valve.
7. Verify before pumping your sup, the inner valve spring is popped up and not in down position.
8. Use a mixture of soap and water on your sup to detect leaks. If leak is detected, refer to the next section.

REPAIRING YOUR ISUP

If it is determined you have a leak or puncture in your sup, follow these steps for a proper repair:

1. Wear latex gloves to avoid skin irritation.
2. Completely deflate your board.
3. Clean area to be repaired with rubbing alcohol.
4. Locate repair kit and size up repair patch to overlap hole or leaking area by at least 1 / 2".
5. Apply glue from repair kit to bottom of patch and air leak area on board.
6. Apply patch to the board.
7. Clean excess glue around patch.
8. Apply weight to newly applied patch for 12 hours in a room temperature environment for the glue to settle.
9. Once dried, apply glue around edges of the patch to complete the sealing process and allow 4 hours to dry.



bluewave
bluewavekayaks.com

